

MYSTIQUE

JUNE 25

MISS PLANET
DR MAHRA
LUTFI

FASHION
FACTOR



The Fashion Factor Show: Where Luxury Meets Talent

In the dazzling heart of Dubai, under the soaring lights of Agenda Dubai, the Fashion Factor Fashion Show unfolded as a key event for luxury fashion in the region. More than just a showcase, Fashion Factor has become an emblem of innovation, excellence, and bold creative expression across the Middle East and beyond.

Held against the backdrop of one of Dubai's most dynamic venues, this year's edition brought together elite fashion houses, rising design talents, and the most sought-after models in a spectacular convergence of culture and couture.

From intricate hand embroidery to cutting-edge silhouettes, the runway was a curated symphony of craftsmanship and vision. Each collection told a story—some rooted in heritage, others pushing the boundaries of the avant-garde. Designers captivated the audience with a diverse palette: flowing silks, structured metallics, and eco-conscious textures redefined what modern luxury looks like.



Couture stepped out of fantasy and into reality

At Fashion Factor, each gown felt like it could belong in a dream — but more importantly, it belonged in real life. Designers created looks that balanced imagination with wearability, allowing fantasy to exist on the shoulders of real women. Think gowns that sparkled like stardust but were tailored to move easily; skirts voluminous enough to turn heads but not overwhelm; embellishments fine enough to be art but subtle enough to wear. This shift made couture more relatable, more personal — and infinitely more powerful.

These designs were meant to walk, dance, and live. The runway became a place where escapism met authenticity. Designers used luxurious fabrics not just for their beauty, but for their comfort and versatility. Necklines were daring, but thoughtfully cut. Trains swept the floor like poetry, yet allowed ease of movement. The message was clear: elegance shouldn't come at the cost of wearability. Fantasy is no longer an illusion in fashion — it's a feeling, made real through clothes that empower women to look like themselves, only elevated. Couture, at its best, lets women write their own fairy tales — and Fashion Factor gave them the wardrobe to do it.





A movement of geometrical shapes makes an entrance

Designers played with shape like architects of movement — their creations speaking in visual geometry. There were gowns with square-shaped bodices, clean and structured at the neckline and shoulders, creating a frame-like effect that gave the upper body strength and definition. These architectural edges softened as they transitioned into flowing skirts, striking a balance between firmness and fluidity.

Linear, hanging silhouettes followed — gowns that fell in uninterrupted vertical lines, creating a sense of elongation and minimalism. These pieces, often in silk or crepe, whispered rather than shouted, skimming the body with a grace that felt almost effortless. Deliberately void of excess, their strength lay in restraint.

Then came designs inspired by the figure-eight, or infinity shape — a poetic loop created through cinched waists and flared hips, sometimes achieved with oversized belts or strategic draping. These outfits emphasized the hourglass without clinging too tightly, offering a silhouette that felt both modern and timeless. The visual rhythm of the form — narrow, full, narrow again — gave movement even to stillness. Equally captivating were the rosebud-inspired dresses, where the gown itself bloomed from the body like a flower just beginning to unfurl. Layers of tulle or organza were twisted and tucked to mimic petals, gathering at the waist or shoulder and spiraling outward. These gowns felt romantic, soft, and alive — as if the fabric itself had been caught mid-blossom.

Elsewhere, designers experimented with cocoon silhouettes, triangular skirts, and even looped or knotted structures that created dimensional drama. Whether carved from satin or suspended in sheer mesh, the gowns showcased a shared understanding: that in fashion, shape is more than form — it's emotion made visible.



A sculptural study takes a majestic form

Designers stepped into the role of visual architects, treating the female form as both canvas and blueprint. The runway became a gallery of geometry, with each piece evoking a different sensation through silhouette alone.

These square forms — often seen in off-shoulder structures or high, angular necklines — created a commanding frame around the décolletage and collarbone. Rather than feel harsh, the rigidity was softened by flowing skirts or pleated waists that allowed the structure to dissolve into movement. The effect was part armor, part poetry — an elegant balance of discipline and grace.



These hanging lines, especially in weightless silk or liquid satin, glided with the models like columns of light. Minimal in embellishment but rich in effect, these gowns made a quiet yet unforgettable impression — the kind that relies not on excess but on perfect proportion.

Sometimes exaggerated through architectural peplums or wide belt cinches, sometimes achieved through strategic draping and cutouts, the look was sensual yet structured. It nodded to the hourglass ideal without cliché, embracing both movement and control.



Designers also experimented with silhouettes that defied traditional forms: cocoon-shaped dresses that enveloped the wearer like a protective shell; triangular skirts that flared sharply from the waist, recalling vintage couture but with a futuristic edge.

Where Pearls Meet Poetry: The Art of Embroidery and Beading

Looped or knotted gowns, where fabric was twisted over the shoulder or across the torso like a ribbon in mid-air. These details weren't merely ornamental — they gave the gowns a sense of three-dimensionality, turning garments into moving sculptures. Adding another layer of luxury, many designs were adorned with pearls delicately sewn onto bodices and sleeves, their lustrous surfaces catching the light with every movement. Intricate embroidery wove through fabrics like fine calligraphy, often accented by clusters of tiny pearls that added both texture and a whisper of vintage glamour. These embellishments elevated the gowns beyond fabric and form — they became tactile stories told in shimmering thread and iridescent beads.

In every instance, shape became narrative. It told stories of empowerment, of romance, of identity. At Fashion Factor, it wasn't just about making a beautiful gown — it was about shaping emotion through design.



Harmony of opposites adds a contrasting edge

The collection also celebrated the dynamic tension between softness and edge through its masterful use of shape. Rounded silhouettes appeared in the form of billowing sleeves, gently curved hems, and voluptuous skirts that seemed to embrace the body like a whispered promise.

These soft, spherical forms invited a sense of femininity and warmth, their generous curves playing with light and shadow as the models moved. In striking contrast, sharp, spiked details punctuated several looks — from sharply angled collars and pointed shoulder accents to daring hemlines that jutted like shards of crystal.

These spiked elements injected an unexpected boldness, transforming gowns into statements of power and rebellion. Together, the interplay of roundness and spikes created a captivating dialogue of dualities, proving once again that couture thrives on the harmony of opposites.



Opulence in motion floating like couture art

Wedding gowns at Fashion Factor were nothing short of breathtaking, each one a masterpiece of intricate embellishment and refined craftsmanship. Layers of delicate lace, hand-sewn crystals, and shimmering beads adorned every inch, catching the light like droplets of morning dew. Pearls were woven into the fabric with painstaking precision, adding a timeless shimmer that felt both regal and breathtaking.



Embroidery fit for the royalty

Embroidery traced floral motifs and swirling patterns, creating a textured tapestry that celebrated tradition while embracing modern artistry. These dresses didn't just promise beauty for a day — they told stories of love, commitment, and dreams woven into every stitch.

Soft tulle skirts floated like clouds, while fitted bodices hugged the figure, offering brides gowns that balanced fantasy with the perfect fit. At Fashion Factor, the embellished wedding dress was a symbol of personal celebration elevated to couture art

Every detail, from the smallest bead to the grandest train, was designed to make the wearer feel unforgettable on her most important day.





Where Earth Meets Stardust: A Symphony of Shine and Hue

The gowns shimmered under the lights with an ethereal glow, as if dusted in stardust kissed by the first light of dawn. Glittering sequins and delicate beadwork caught the light with every movement, creating a dance of light that mesmerized the eye. Shades of deep sapphire, soft powder blue, and muted teal merged seamlessly with warm earth tones — terracotta, sandy beige, and olive green — grounding the collection in a natural elemental palette.

This harmonious blend of sparkling embellishments and organic colors created a visual poetry, where the brilliance of the cosmos met the calm strength of the earth. The collection was both otherworldly and deeply connected, a celebration of nature's hues enhancing couture's magic.





Ethereal Glow: Glittering Embellishments for a woman's special day

A wedding gown emerged that redefined grandeur and opulence. This masterpiece was a breathtaking fusion of craftsmanship and artistry — a gown that seemed to tell a story with every stitch. The silhouette was commanding yet ethereal, featuring a dramatically flared skirt that cascaded like liquid ivory down the runway, its layers of silk organza shimmering softly with every step. What truly set this dress apart was the extraordinary embellishment: hand-embroidered floral motifs crafted from thousands of tiny crystals, pearls, and sequins that caught the light like drops of morning frost.

The bodice, sculpted to perfection, was adorned with intricate beadwork that traced delicate vines and blossoms across the neckline and shoulders, framing the face like a precious jewel. A cathedral-length train, embroidered with matching motifs, trailed behind like a regal whisper, inviting awe with every sweep. This creation was not merely a dress — it was a celebration of love's timeless grandeur, designed to make a bride feel nothing less than majestic.





Passion Meets Mystery: The Red and Black Edit

In a bold, daring statement, the collection unfolded exclusively in shades of red and black — colors that embody passion, power, and mystery. Each gown was a study in contrast and intensity, where the fiery warmth of crimson met the deep sophistication of ebony. Silhouettes ranged from sleek, form-fitting dresses in glossy black satin to dramatic red gowns bursting with layered tulle and intricate lace. Embellishments took the form of black beadwork on scarlet fabrics, and vice versa, creating a mesmerizing interplay of texture and shadow.

Some designs featured sharp, architectural shapes — pointed shoulders and cinched waists — while others embraced fluidity, with flowing skirts that swirled like flames or shadows. The palette was unapologetically fierce, evoking a narrative of romance laced with edge, and elegance tinged with rebellion. This all-red-and-black collection wasn't just a visual feast; it was a powerful declaration of couture's ability to channel raw emotion through color and form.





Futuristic Flair: Bold Silhouettes and Chic Accents

Sleek, fitted silhouettes hugged every curve with a futuristic edge, crafted from glossy, high-tech fabrics that shimmered like liquid metal. Oversized bows at shoulders and waists added a playful contrast to the sharp, architectural lines. Completing the look, bold angular glasses gave the ensembles a tech-chic vibe—where innovation meets undeniable style.

Complementing the forward-thinking vibe, models sported futuristic eyewear—bold, angular glasses that framed the face like digital visors, elevating each ensemble with an aura of tech-chic sophistication. This was fashion unbound by tradition, a fearless exploration of form, function, and flair.





Blushing Botanicals: Floral Embroidery Blooms

Romance took center stage in a series of dresses that felt as delicate as a pressed flower and as refined as heirloom lace. Crafted in soft pink tones — from the faintest whisper of blush to rich rose quartz — each gown was a study in femininity and craftsmanship.

Floral embroidery bloomed across bodices, sleeves, and flowing skirts, stitched with fine threads in tonal pinks and soft metallics, creating a garden in motion. Petal-shaped appliqués and tiny glass beads gave dimension and depth, making the florals appear to blossom off the fabric.



Red Rewritten: Lace as a Language of Power

An overflow of red stole the spotlight, rendered entirely in lace — but far from traditional. These all-red ensembles were bold, imaginative, and unapologetically sensual, transforming the delicate fabric into a powerful fashion statement. Lace appeared in every texture and shade of red from deep garnet to fiery scarlet, layered and sculpted into avant-garde silhouettes.

Some gowns featured oversized lace florals cut into abstract shapes, blooming across bodices like wearable art. Others played with transparency and shadow, where intricate cutouts traced the curves of the body, revealing and concealing in equal measure. Billowing sleeves, asymmetrical hems, and unexpected layering gave each piece a fresh, contemporary edge.

Paired with daring accessories — veils, leather gloves, or architectural collars or incredible flowy scarfs — these red lace looks redefined romanticism with rebellion. In this collection, red wasn't just a color — it was a creative force.





Veiled Grace: Arabian Influence and the Modern Battoulah Revival

Drawing from the rich tapestry of Gulf heritage, the collection embraced Arabian influences with a sense of reverence and reinvention. Flowing silhouettes in deep jewel tones and metallic accents paid homage to traditional garments, while sheer overlays, hand-beaded panels, and luxurious layering brought them into the realm of contemporary couture. Central to this visual language was the presence of the battoulah — the traditional metallic face covering — reimagined here as both a cultural symbol and a fashion statement.

Worn not as concealment, but as celebration, it framed the face with bold elegance, often paired with embroidered hoods, veils, or sculpted capes that billowed behind like desert wind. Gold-threaded fabrics, arabesque patterns, and calligraphy-inspired detailing enhanced the narrative, creating a dialogue between modesty and modernity. These were not costumes, but powerful expressions — fashion that honored its roots while stepping fearlessly into the future.

Veiled and iconic: The Elegance of Arabian Tradition Reimagined



Jewel-toned gowns in regal shades of purple and deep emerald brought a lush richness to the runway, echoing the grandeur of Arabian heritage through modern craftsmanship.

These colors, often associated with royalty and mysticism in the region, were elevated through shimmering satins, rich velvets, and sheer tulle overlays adorned with intricate gold embroidery and delicate beadwork.

Flowing kaftan-inspired cuts and high-neck silhouettes paid homage to traditional attire, while the inclusion of the battoulah added a powerful cultural layer. The face coverings, crafted in metallic finishes or delicately embroidered mesh, appeared almost like jewelry — bold yet graceful, grounding the contemporary silhouettes in deep-rooted symbolism. Paired with long trailing capes, structured shoulders, and ornate belts, the purple and green dresses felt ceremonial, yet utterly modern — a poetic fusion of past and present, modesty and majesty.



The interplay of deep plum and verdant green created a visual rhythm that felt both opulent and grounded. Each look seemed to carry the quiet strength of tradition, yet moved with a fluidity that spoke to a woman fully present in the now.

These looks weren't just garments — they were iconic moments in motion, merging cultural identity with high fashion in a way that felt both timeless and groundbreaking.





Desert Majesty: The Arabian Princess Unveiled

The red dress was a fiery celebration of craftsmanship and color, embroidered with intricate patterns that wove stories of passion and heritage. Rich crimson fabric served as the perfect canvas for swirling gold threadwork, delicate florals, and ornate motifs that shimmered subtly with every movement. The silhouette hugged the body confidently, balancing boldness with elegance, while sleeves and neckline featured fine lace detailing that softened the intensity of the hue. This gown wasn't just worn—it commanded attention, blending traditional artistry with a modern edge in a breathtaking display of couture.

In contrast, the gold dress radiated a quiet, regal sophistication. Its luminous fabric glistened like morning light on desert sands, draping fluidly over the body in a silhouette both graceful and statuesque. The highlight was a long, sheer overlay that cascaded behind like a whisper, embroidered with delicate motifs that caught the light and added layers of depth and texture. This translucent veil-like cover gave the gown an ethereal quality, balancing the richness of the gold beneath with airy elegance. Together, the elements created a look that was timeless, majestic, and profoundly poetic.

Emerald Elegance: Gold Embroidery Woven Into Regal Luxury

Emerald and gold came together in a lavish symphony of color and craftsmanship, bringing to life dresses that radiated opulence and refinement. The rich green fabrics—ranging from deep forest hues to vibrant jewel tones—served as the perfect backdrop for intricate gold embroidery that traced delicate arabesques, floral patterns, and geometric motifs across bodices, sleeves, and flowing skirts. Each stitch shimmered like threads of sunlight woven into fabric, elevating the gowns to regal heights.

Silhouettes varied from sleek and tailored to voluminous and flowing, but all shared an air of majestic elegance. Accents of gold beadwork and sequins added texture and depth, catching the light with every movement and transforming each dress into a statement of cultural heritage and modern luxury. The interplay of green and gold created a mesmerizing contrast that felt both grounded in tradition and refreshingly modern. These gowns whispered stories of ancient kingdoms while embracing the bold spirit of today's fashion innovators.







Captivating in Black: Where Modern Edge Meets Delicate Detail

A striking black dress captivated the runway with its innovative silhouette—short in the front to reveal graceful legs and elegantly cascading into a longer, flowing train at the back. This high-low design created a dynamic sense of movement and drama, catching the light with every step and offering a fresh twist on classic eveningwear. The bold shape was softened by delicate lace detailing adorning the shoulders, where intricate patterns traced the skin like whispers of romance and sophistication.

This interplay of textures added depth and femininity to the otherwise sleek, modern structure of the gown. The contrast between the edgy cut and the delicate lace created a perfect balance, embodying both daring confidence and timeless elegance. Whether viewed head-on or in motion from behind, the dress was a masterclass in marrying contemporary design with subtle, exquisite craftsmanship.

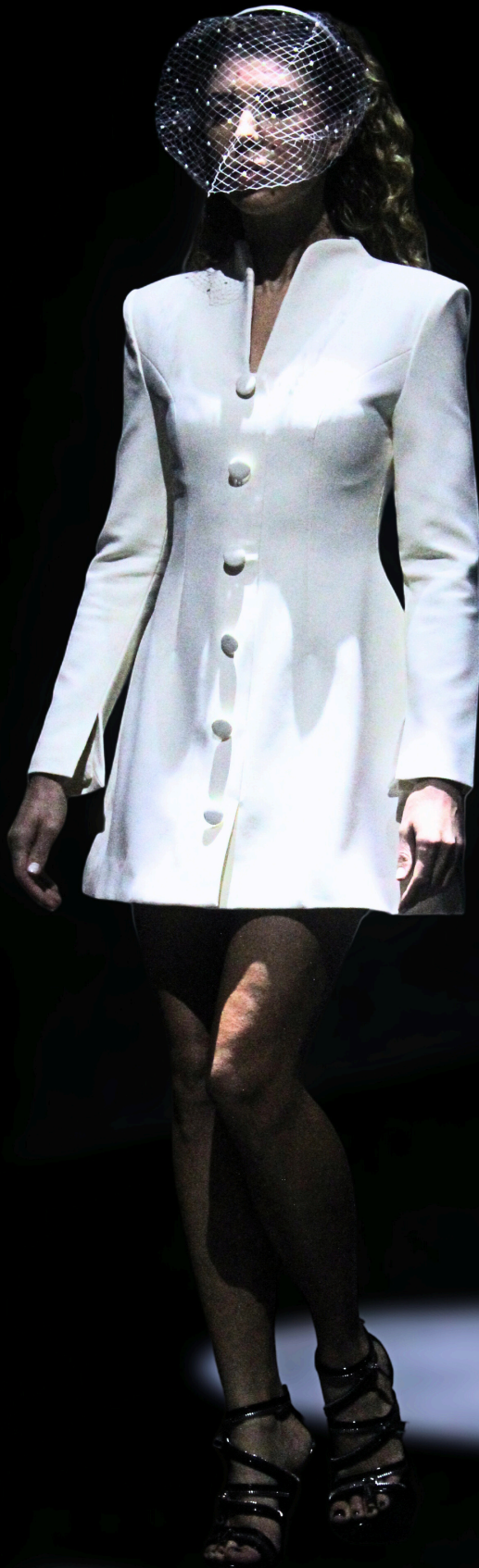
Earth's Embrace: A Wedding Collection Rooted in Nature

The wedding collection embraced the warm, grounding beauty of earthy tones, drawing deeply from nature's rich palette to craft gowns that felt both timeless and intimately connected to the world around them. Shades of soft terracotta, muted olive, warm taupe, and sandy beige wove seamlessly through flowing silks, delicate linens, and organic laces, offering brides a sophisticated alternative to the classic bridal whites. These natural hues created a soothing, understated elegance that echoed the textures and colors found in sunlit deserts, forest floors, and autumnal landscapes. Subtle yet intricate embroidery and beadwork mimicked the gentle patterns of leaves, vines, and blossoms, imbuing each gown with a quiet, organic sophistication that felt handcrafted and heartfelt.

Silhouettes ranged from softly draped, flowing skirts to more structured forms that celebrated the bride's natural grace and strength, each design offering versatility for intimate garden ceremonies or grand rustic affairs. The collection honored the earth not only in its color choices but through the use of sustainable, eco-conscious fabrics and craftsmanship, making each gown a celebration of love and respect for nature. Ultimately, these gowns were more than wedding dresses—they were wearable stories of connection, harmony, and timeless beauty that invited brides to embrace their own unique journey with grace and authenticity.



Weaving White Mystery: Mesh as the lightweight ever-evolving trend



In the ever-evolving world of fashion, where tradition meets innovation, mesh face covers have emerged as a striking accessory that redefines how we think about veils and face coverings. Inspired by the simple yet iconic mesh bags often used to carry oranges and other fruits, these netted fabrics bring an unexpected texture and visual intrigue to the runway and beyond.

Mesh face covers are crafted from sheer, lightweight netting that offers a see-through quality, creating a delicate interplay between concealment and revelation. This airy fabric, with its geometric crisscross patterns, transforms the concept of a veil into something modern, edgy, and effortlessly stylish. Unlike heavier, opaque materials, mesh maintains breathability and lightness, making it both a practical and fashion-forward choice.

White in Movement: Blurring Lines Between Concealment and Reveal

Designers have embraced mesh for its versatility, draping it over the face or head in ways that blend transparency with structure. The result is a look that balances mystery with boldness—a contemporary twist on a classic accessory. Whether styled as a partial face cover or a full veil, mesh face covers challenge traditional notions of femininity and elegance, inviting wearers to explore new expressions of identity and style.

Beyond its aesthetic appeal, mesh also speaks to a larger movement within fashion—one that values experimentation and the fusion of everyday materials with high design. By elevating a humble, utilitarian fabric into a statement piece, mesh face covers celebrate creativity and innovation, proving that inspiration can be found in the most unexpected places.

In essence, mesh face covers offer more than just a visual statement; they represent a dialogue between heritage and modernity, function and fashion, subtlety and impact. As this trend continues to gain momentum, it promises to reshape how we view veils and face coverings, turning them into powerful symbols of contemporary couture.



A choreographed Garden Scene - Wearable Art

A radiant celebration of color and craftsmanship, the pink and yellow dress commanded attention with its bold palette and intricate floral artistry. Set against a luminous yellow base, delicate pink floral motifs bloomed across the fabric, each petal carefully placed to evoke movement and dimension. Rather than blending colors, the design embraced contrast—letting the soft pink florals burst vividly against the sunny yellow backdrop, like blossoms bathed in golden light. The gown's silhouette was fluid and feminine, crafted from airy organza or silk that allowed it to sway with a graceful rhythm, making each step feel like part of a choreographed garden scene.

The floral shapes weren't merely decorative—they brought texture and intention to the dress, creating visual rhythm along the hem, bodice, and perhaps even cascading down one shoulder or sleeve. The pink detailing added a romantic, almost whimsical softness, balancing the bold energy of the yellow. Whether viewed up close or from afar, the dress radiated joy, optimism, and undeniable charm. It was the kind of look that felt perfect for springtime celebrations or sun-drenched runways—equal parts refined couture and wearable art.



Draped in Identity: A Tribute to the Emirates in Couture Form

A striking dress inspired by the colors of the Emirates flag commanded the runway with both pride and poise. The design wove red, green, white, and black into a fluid, harmonious composition — not just as color-blocking, but as a visual narrative. A deep black bodice anchored the silhouette with elegance, while a flowing green sash wrapped the waist like a symbol of growth.

Crimson panels cascaded dramatically from the shoulder, adding movement and passion, while sheer white layers softened the structure with lightness and grace. Embellished with subtle crystal detailing and gold thread, the dress was more than patriotic — it was poetic. It celebrated heritage not through imitation, but transformation, turning national colors into an emblem of modern Emirati pride, couture artistry, and timeless femininity.



A Regal Vision: Sophistication Embodied in Every Detail

This wedding dress was the epitome of sophistication, crafted with meticulous attention to detail that transformed fabric into a masterpiece. The silhouette was timeless yet modern, hugging the body with gentle precision before flaring into a majestic train embroidered with delicate lace and hand-sewn pearls that shimmered softly under the light. The bodice featured intricate needlework—floral motifs intertwined with subtle beadwork—that seemed to tell a story of elegance and grace. Completing the ensemble was a stunning crown, an exquisite piece encrusted with diamonds and pearls, designed to crown the bride with an air of royalty and poise.

The gown's delicate layers moved with effortless grace, catching the light with every step, creating an almost ethereal glow around the bride. This was more than a dress—it was a celebration of artistry and a timeless ode to the beauty of love itself.





Disruptive and mysterious : Shibina sets a new innovative tone

Shibina's latest runway was a mesmerizingly eerie journey, unfolding like a shadowed tale whispered through a twilight forest. The disruptive walk set the tone—models moving with an unsettling, deliberate grace that blurred the line between fashion and performance art. Their steps echoed the rhythm of rustling leaves and distant whispers, creating an atmosphere thick with suspense and mystery. This was no ordinary show; it was a descent into a dreamlike world where the uncanny met the sublime.

The collection itself was perfectly attuned to this vision. Garments layered in muted earth tones—deep umber, mossy greens, charcoal blacks—evoked the very essence of a forest on the edge of dusk. Every detail contributed to the unsettling yet captivating aura, making the collection feel less like clothing and more like a living ecosystem.

The mood of the show was enhanced by dim lighting and a mysterious soundscape that seemed to breathe with the forest's life—an immersive experience that pulled the audience into this enigmatic realm. Shibina challenged not only fashion norms but also perceptions of beauty and comfort, inviting us to embrace the strange and the uncanny. It was a daring exploration of nature's darker side, where folklore, fantasy, and high fashion intertwined in a spellbinding display.





Adding a touch of luxe texture, several gowns featured plush fur details gracefully adorning the sleeves. The soft, voluminous feathers contrasted beautifully with sleek fabrics, lending an air of warmth and sophistication. Whether in classic whites, deep neutrals, or bold hues, these fur accents elevated the silhouettes, turning simple sleeve lines into statement elements that whispered elegance and refinement. This subtle yet striking detail brought a tactile richness to the designs, blending comfort with high-fashion allure.



The Art of Lightness: Feather Accents on Sleeves





Prints and Embroidery Details Shine

Delicate feathers adorned the sleeves, adding a light, airy touch that felt both effortless and luxurious. They fluttered subtly with every movement, creating a soft, ethereal effect that elevated the gowns without overwhelming them. This feather detail introduced a playful yet sophisticated texture, blending seamlessly with flowing fabrics to embody grace and freedom on the runway. It was a gentle nod to nature's elegance, transforming sleeves into a statement of delicate beauty and modern refinement.





An Elegant Cascade of Vivid and Ethereal Vision

A vibrant cascade of bright, long dresses brought the runway to life, each piece flowing effortlessly with every step. Bold hues—from radiant yellows and fiery oranges to electric blues and vivid pinks—created a lively spectrum that dazzled the eye. The gowns, crafted from lightweight fabrics like silk and chiffon, billowed and swayed, amplifying the grace and presence of each model. Length and movement combined to form an elegant dance of color and form, turning the catwalk into a celebration of joy, confidence, and unrestrained femininity. These dresses weren't just about making an entrance; they were about lighting up the room with energy and brilliance.

Alongside these vivid tones, ethereal whites and soft blushy pinks introduced a delicate balance to the collection. Their gentle hues evoked a sense of romance and purity, offering a soft, dreamy contrast to the bold colors. Crafted from flowing fabrics like silk and chiffon, these dresses moved with an airy grace, creating a light, almost otherworldly presence on the runway. The subtlety of the blush and white tones enhanced the overall harmony, making the entire presentation feel like a poetic celebration of femininity and elegance.

Adidas Takes the Lead: Where Sport Meets Style on the Runway



Adidas redefined streetwear sophistication at its latest fashion show, unveiling a dynamic fusion of performance and style that pushed the boundaries of athletic fashion.

Set against a backdrop pulsing with energy, the runway came alive with bold silhouettes, technical fabrics, and futuristic tailoring.



Iconic classics were reimagined with elevated textures, gender-fluid cuts, and unexpected color palettes, bridging the gap between sport and high fashion. With celebrity athletes, influencers, and tastemakers lining the front row, the show was more than a collection—it was a powerful statement on movement, identity, and innovation.



Balmain Men's fashion - iconic appearance on the Fashion Factor stage

In one of the most unexpected and talked-about moments of the evening, Balmain made a surprise appearance at Fashion Factor, sending ripples of excitement through the fashion crowd. Known for its bold glamour and Parisian edge, the iconic house brought a level of haute couture prestige that no one saw coming. The runway erupted in applause as Balmain models emerged in sharply cut men's T-shirts, followed by embellished fabrics and architectural silhouettes—signature elements reinterpreted for the regional stage. The appearance not only elevated the show's global relevance but also signaled a powerful message: that Dubai's fashion scene is now featuring one of the world's most elite maisons.





Beads and Brilliance: The Splendor of Indian Embroidery

Indian couture brought an intoxicating blend of opulence and artistry to the runway, with dresses that dazzled through their intricate craftsmanship and majestic bead decor. Each garment was a masterpiece, woven from luxurious silks, velvets, and brocades, and adorned with elaborate embroidery, sequins, and shimmering beads that traced intricate patterns inspired by nature, mythology, and heritage. The beadwork, ranging from tiny glass beads to oversized gemstones, created a tactile richness that caught the light from every angle, adding depth and dimension to the lavish fabrics. Silhouettes flowed gracefully with voluminous skirts, structured bodices, and dramatic dupattas, each piece telling a story of regal grandeur and timeless tradition. These dresses weren't merely worn—they were celebrated, embodying the vibrant spirit and exquisite craftsmanship that define Indian bridal and evening wear.





Incredible Stories were crafted Through Fabric and Vision on the Fashion Factor stage

Fashion Factor was a breathtaking celebration of creativity, craftsmanship, and cultural dialogue, where designers pushed boundaries while honoring heritage. From ethereal gowns to bold, futuristic silhouettes, each collection told a unique story woven with meticulous detail and innovative vision. The event transformed couture from distant fantasy into wearable art—elevating fashion into a powerful expression of identity, tradition, and modern elegance. It was a vibrant showcase of talent and passion, proving that true style is both timeless and forward-looking.



Mystique © ™ 2025. All rights reserved.

All content, including text, images, and designs, is protected by copyright law and belongs to its creator, mystiquefashionmagazine.com website owner. We kindly ask that you do not use, reproduce, or distribute this material without permission. The copyright holder retains the rights to their work. If you would like to inquire about using the content, please feel free to reach out for permission details. Thank you for respecting the copyright law.

Created with passion for fashion ♡